

## \$424,000 - Sw 25 56-11 W4, Rural St. Paul County

MLS® #E4356142

**\$424,000**

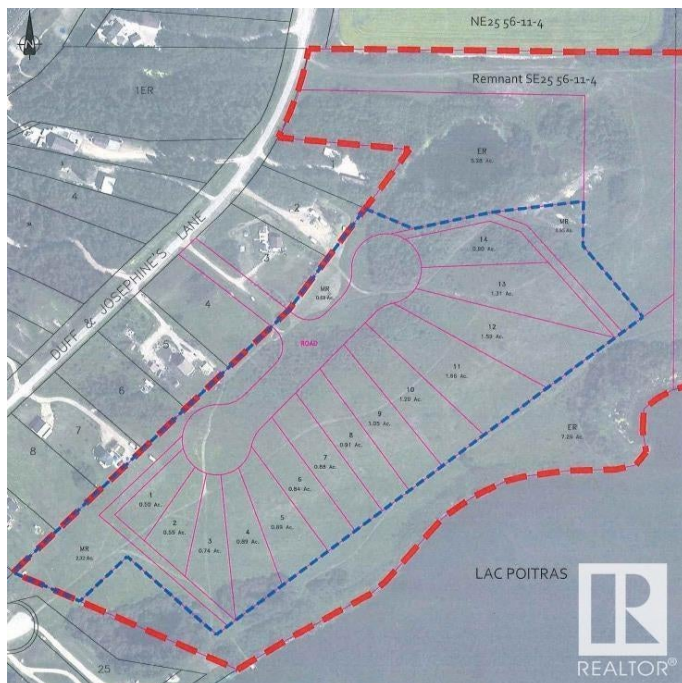
0 Bedroom, 0.00 Bathroom,  
Rural on 38.87 Acres

Labreques Paradise, Rural St. Paul County,  
AB

One Of A Kind Waterfront On Poitras Lac!  
Rare waters edge title of 38.87 acres of prime waterfront land & rolling hills with views and access onto Lac Poitras which mirrors Lac Sante. At the end of the road, down the well renown French Quarter and Labrecque Paradise, unnamed land awaits its future owner to develop or hold as a legacy piece. This stunning property offers a unique opportunity to own an extraordinary parcel that your family can cherish for generations. Be the WISE one who invested in this rare, legendary parcel and will be spoken about around the late night bonfires of Lac Sante & Lac Poitras for generations to come. Potential for a pitch and putt golf course and RV Park. With a recent subdivision development concept report paid for by seller for a 15-16 lot subdivision already in place, this is an investor's dream. Seize the chance to own a piece of paradise on Poitras Lac!

### Essential Information

MLS® #	E4356142
Price	\$424,000
Bathrooms	0.00
Acres	38.87
Type	Rural



Sub-Type	Vacant Lot/Land
Status	Active

### Community Information

Address	Sw 25 56-11 W4
Area	Rural St. Paul County
Subdivision	Labreques Paradise
City	Rural St. Paul County
County	ALBERTA
Province	AB
Postal Code	T0A 3A0

### Exterior

Exterior Features	Boating, Lake View, Private Setting, Waterfront Property
-------------------	--

### Additional Information

Date Listed	August 28th, 2023
Days on Market	708
Zoning	Zone 60

DATA IS DEEMED RELIABLE BUT IS NOT GUARANTEED ACCURATE BY THE REALTORS® ASSOCIATION OF EDMONTON. COPYRIGHT 2025 BY THE REALTORS® ASSOCIATION OF EDMONTON. ALL RIGHTS RESERVED. Trademarks are owned or controlled by the Canadian Real Estate Association (CREA) and identify real estate professionals who are members of CREA (REALTOR®, REALTORS®) and/or the quality of services they provide (MLS®, Multiple Listing Service®)

Listing information last updated on August 5th, 2025 at 6:17pm MDT