

Courtesy Of Michael Pino Of RE/MAX Elite

\$439,800 - 202 14205 96 Avenue, Edmonton

MLS® #E4421657

\$439,800

2 Bedroom, 2.00 Bathroom, 1,183 sqft

Condo / Townhouse on 0.00 Acres

Crestwood, Edmonton, AB

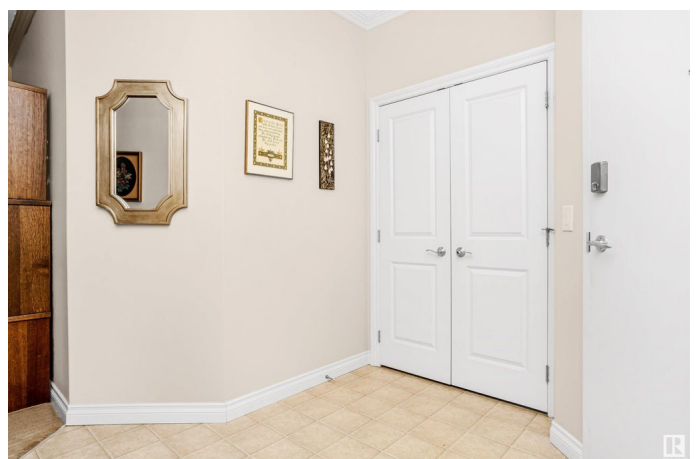
THE VALLEYVIEW in CRESTWOOD is an exclusive 24 unit complex consisting of STEEL & CONCRETE construction for increased sound barrier & durability. This beautifully maintained 1182 sqft unit features an open concept design with 9' ceilings, 2 bedrooms, 2 bathrooms, & convenient IN SUITE LAUNDRY. The well-appointed kitchen boasts crisp white cabinetry, island, & an adjacent dining area. Step through the garden door to the COVERED DECK, complete with a gas hookup for outdoor grilling. The living room is highlighted by a cozy GAS FIREPLACE & large north & east facing windows. The primary suite offers dual closets & a 4pc ensuite with soaker tub. The 2nd bedroom is on the opposite side of the unit for added privacy & is next to a 3pc main bath. Enjoy a TITLED UNDERGROUND PARKING stall with a storage locker & comfortable A/C . Situated next to Crestwood center with its many amenities, parks, schools, & easy access to trails weaving through the River Valley, a perfect blend of nature & urban convenience.

Built in 2004

Essential Information

MLS® # E4421657

Price \$439,800



Bedrooms	2
Bathrooms	2.00
Full Baths	2
Square Footage	1,183
Acres	0.00
Year Built	2004
Type	Condo / Townhouse
Sub-Type	Lowrise Apartment
Style	Single Level Apartment
Status	Active

Community Information

Address	202 14205 96 Avenue
Area	Edmonton
Subdivision	Crestwood
City	Edmonton
County	ALBERTA
Province	AB
Postal Code	T5N 0C2

Amenities

Amenities	On Street Parking, Air Conditioner, Ceiling 9 ft., Closet Organizers, Deck, Detectors Smoke, Parking-Visitor, Secured Parking, Sprinkler System-Fire, Storage-Locker Room, Vinyl Windows
Parking	Underground

Interior

Interior Features	ensuite bathroom
Appliances	Air Conditioning-Central, Dishwasher-Built-In, Dryer, Microwave Hood Fan, Refrigerator, Stove-Electric, Washer, Window Coverings
Heating	Forced Air-1, Natural Gas
Fireplace	Yes
Fireplaces	Corner, Mantel, Tile Surround
# of Stories	4
Stories	1
Has Basement	Yes
Basement	None, No Basement

Exterior

Exterior	Steel, Brick, Stone, Stucco
Exterior Features	Back Lane, Corner Lot, Landscaped, Public Transportation, Schools, Shopping Nearby
Roof	Tar & Gravel
Construction	Steel, Brick, Stone, Stucco
Foundation	Concrete Perimeter

Additional Information

Date Listed	February 14th, 2025
Days on Market	170
Zoning	Zone 10
Condo Fee	\$750

DATA IS DEEMED RELIABLE BUT IS NOT GUARANTEED ACCURATE BY THE REALTORS® ASSOCIATION OF EDMONTON. COPYRIGHT 2025 BY THE REALTORS® ASSOCIATION OF EDMONTON. ALL RIGHTS RESERVED. Trademarks are owned or controlled by the Canadian Real Estate Association (CREA) and identify real estate professionals who are members of CREA (REALTOR®, REALTORS®) and/or the quality of services they provide (MLS®, Multiple Listing Service®)

Listing information last updated on August 3rd, 2025 at 6:47pm MDT