

\$699,900 - 20 52515 Rge Rd 52, Rural Parkland County

MLS® #E4428764

\$699,900

2 Bedroom, 1.00 Bathroom, 818 sqft

Rural on 0.34 Acres

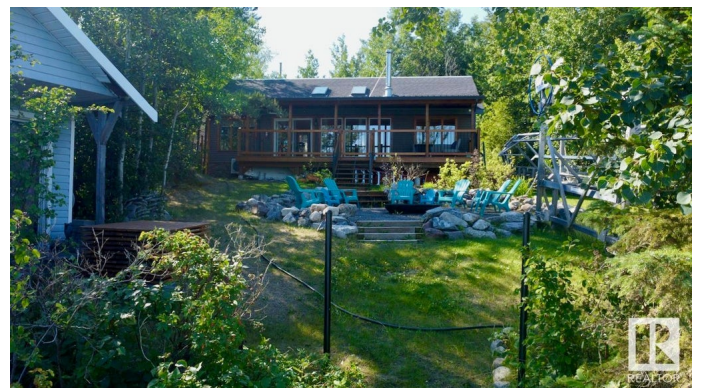
Sundance Meadows, Rural Parkland County,
AB

Opportunity knocks with this Sundance Meadows lakefront property! This charming, fully renovated 3-season home combines brightness and cheer with a cozy cabin feel, and could easily be upgraded to a year-round retreat. It features 2 bedrooms, a loft area for extra sleeping space, a 3-piece bathroom, and an open-concept kitchen and living room with a freestanding fireplace for those cooler evenings. Enjoy the outdoors from the fully covered deck overlooking the lake and a large firepit area in the backyard. There's also a bunkhouse that can accommodate up to 8 guests easily. The spacious backyard provides ample parking or space for visitors with travel trailers. Additionally, you have rails for raising or lowering your lift station, dock, or boat on a winch system. Don't miss out on this incredible lakefront opportunity! Whether you're seeking a peaceful retreat or a vibrant gathering place for family and friends, this property has it all.

Built in 1967

Essential Information

MLS® #	E4428764
Price	\$699,900
Bedrooms	2



Bathrooms	1.00
Full Baths	1
Square Footage	818
Acres	0.34
Year Built	1967
Type	Rural
Sub-Type	Detached Single Family
Style	Bungalow
Status	Active

Community Information

Address	20 52515 Rge Rd 52
Area	Rural Parkland County
Subdivision	Sundance Meadows
City	Rural Parkland County
County	ALBERTA
Province	AB
Postal Code	T0E 2B0

Amenities

Features	Air Conditioner, Crawl Space, Deck, Fire Pit, Lake Privileges, Skylight, Vaulted Ceiling
----------	--

Interior

Heating	Heat Pump, Electric
Fireplace	Yes
Stories	1
Has Basement	Yes
Basement	None, No Basement

Exterior

Exterior	Wood
Exterior Features	Lake Access Property, Lake View, No Through Road, Private Setting, Recreation Use, Waterfront Property
Construction	Wood
Foundation	Piling

Additional Information

Date Listed	April 1st, 2025
-------------	-----------------

Days on Market 77

Zoning Zone 93

DATA IS DEEMED RELIABLE BUT IS NOT GUARANTEED ACCURATE BY THE REALTORS® ASSOCIATION OF EDMONTON. COPYRIGHT 2025 BY THE REALTORS® ASSOCIATION OF EDMONTON. ALL RIGHTS RESERVED. Trademarks are owned or controlled by the Canadian Real Estate Association (CREA) and identify real estate professionals who are members of CREA (REALTOR®, REALTORS®) and/or the quality of services they provide (MLS®, Multiple Listing Service®)

Listing information last updated on June 17th, 2025 at 2:47am MDT