

\$905,000 - 50465 Range Road 51, Rural Parkland County

MLS® #E4431404

\$905,000

0 Bedroom, 0.00 Bathroom,
Rural on 319.01 Acres

None, Rural Parkland County, AB

Half section of pasture, partially treed,
substantial clearing has been done. Available
for 2025 grazing season.

Essential Information

MLS® #	E4431404
Price	\$905,000
Bathrooms	0.00
Acres	319.01
Type	Rural
Sub-Type	Vacant Lot/Land
Status	Active

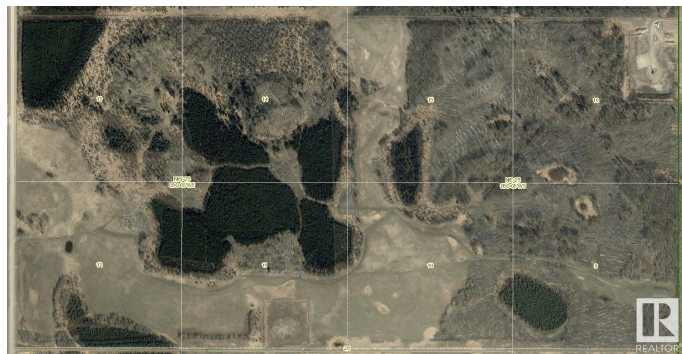
Community Information

Address	50465 Range Road 51
Area	Rural Parkland County
Subdivision	None
City	Rural Parkland County
County	ALBERTA
Province	AB
Postal Code	T0C 2H0

Exterior

Exterior Features Fenced

Additional Information



Date Listed April 16th, 2025

Days on Market 112

Zoning Zone 90

DATA IS DEEMED RELIABLE BUT IS NOT GUARANTEED ACCURATE BY THE REALTORS® ASSOCIATION OF EDMONTON. COPYRIGHT 2025 BY THE REALTORS® ASSOCIATION OF EDMONTON. ALL RIGHTS RESERVED. Trademarks are owned or controlled by the Canadian Real Estate Association (CREA) and identify real estate professionals who are members of CREA (REALTOR®, REALTORS®) and/or the quality of services they provide (MLS®, Multiple Listing Service®)

Listing information last updated on August 6th, 2025 at 8:47am MDT