

## **\$699,999 - 310 21539 Twp 503, Rural Leduc County**

MLS® #E4433256

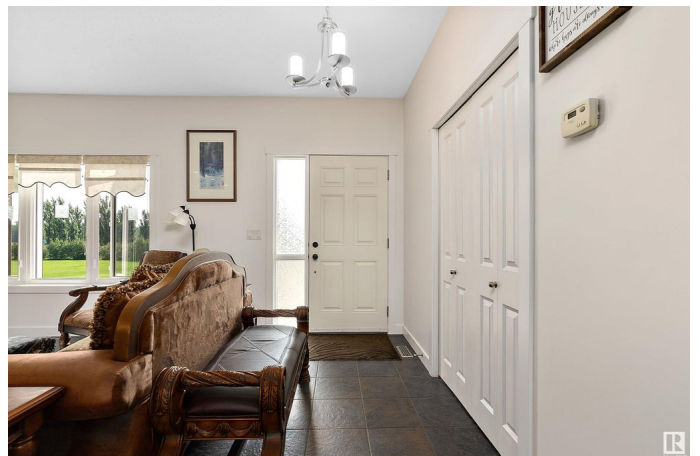
**\$699,999**

5 Bedroom, 3.50 Bathroom, 1,604 sqft

Rural on 2.82 Acres

Wildland Meadows, Rural Leduc County, AB

WOW, this absolutely STUNNING acreage may not last long! Over 3000 sq ft, 5 bedroom, 4 bathroom home is located in Wildland Meadows/Leduc County on paved road right to sub-division! The BEST part...private, quiet & secluded on an end road surrounded by protected sanctuary. Spacious front entry, dark rich hardwood floors, a gorgeous stone (floor-ceiling) fireplace, large dining area with custom stone-features, kitchen, island, stainless appliances (new stove), & opens to sunny SW HUGE deck! Master suite opens to deck, 3 pc ensuite, a walk in closet (& second large closet), 2 more generously sized bedrooms, a 4pc main bath, plus 2pc bathroom & lrg walk-into laundry /w sink, cupboard & storage, all make up main level. Fully-f basement, very large family room, games room, 4th & 5th HUGE bedrooms, another 4pc bathroom, tons of storage, this is a dream home! Only ONE owner, custom bungalow, attached o/s dbl heated garage, plus o/s detached garage shop /w poured cement. Home is equipped with back up generator!



Built in 2010

### **Essential Information**

MLS® # E4433256

Price \$699,999

Bedrooms	5
Bathrooms	3.50
Full Baths	3
Half Baths	1
Square Footage	1,604
Acres	2.82
Year Built	2010
Type	Rural
Sub-Type	Detached Condominium
Style	Bungalow
Status	Active

### **Community Information**

Address	310 21539 Twp 503
Area	Rural Leduc County
Subdivision	Wildland Meadows
City	Rural Leduc County
County	ALBERTA
Province	AB
Postal Code	T0B 3M2

### **Amenities**

Features	Ceiling 9 ft., Deck, Detectors Smoke, No Animal Home, No Smoking Home, See Remarks
----------	--

### **Interior**

Interior Features	ensuite bathroom
Heating	Forced Air-1, Natural Gas
Fireplace	Yes
Stories	2
Has Basement	Yes
Basement	Full, Finished

### **Exterior**

Exterior	Wood
Exterior Features	Landscaped, Low Maintenance Landscape, See Remarks
Construction	Wood
Foundation	Concrete Perimeter

### **Additional Information**

Date Listed	April 29th, 2025
Days on Market	49
Zoning	Zone 80
Condo Fee	\$125

DATA IS DEEMED RELIABLE BUT IS NOT GUARANTEED ACCURATE BY THE REALTORS® ASSOCIATION OF EDMONTON. COPYRIGHT 2025 BY THE REALTORS® ASSOCIATION OF EDMONTON. ALL RIGHTS RESERVED. Trademarks are owned or controlled by the Canadian Real Estate Association (CREA) and identify real estate professionals who are members of CREA (REALTOR®, REALTORS®) and/or the quality of services they provide (MLS®, Multiple Listing Service®)

Listing information last updated on June 16th, 2025 at 11:47pm MDT