

\$103,900 - 57502 Rr 85, Rural St. Paul County

MLS® #E4433654

\$103,900

0 Bedroom, 0.00 Bathroom,
Rural on 7.24 Acres

None, Rural St. Paul County, AB

Ideal Building Site Just Minutes from Town!

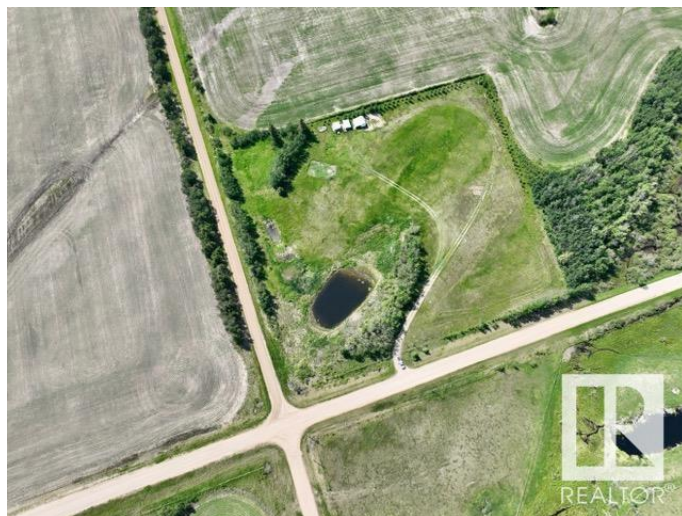
This 7.24-acre property offers the perfect blend of function and charm. Tree-lined for natural wind protection and privacy, the land is fenced and ready for your vision - whether it's a hobby farm with a barn and animals, a home with your dream shop or just a simple peaceful country retreat. A scenic dugout adds character and practical water use, while a lean-to shed is already in place for immediate storage or shelter. With power on site and under 10 minutes from St. Paul, this is a rare opportunity to enjoy the tranquility of rural living without sacrificing convenience. Build your dream home and start your next chapter in the heart of the countryside!

Essential Information

MLS® #	E4433654
Price	\$103,900
Bathrooms	0.00
Acres	7.24
Type	Rural
Sub-Type	Vacant Lot/Land
Status	Active

Community Information

Address 57502 Rr 85



Area	Rural St. Paul County
Subdivision	None
City	Rural St. Paul County
County	ALBERTA
Province	AB
Postal Code	T0A 3A0

Exterior

Exterior Features Corner Lot, Fenced, Level Land

Additional Information

Date Listed	April 30th, 2025
Days on Market	97
Zoning	Zone 60

DATA IS DEEMED RELIABLE BUT IS NOT GUARANTEED ACCURATE BY THE REALTORS® ASSOCIATION OF EDMONTON. COPYRIGHT 2025 BY THE REALTORS® ASSOCIATION OF EDMONTON. ALL RIGHTS RESERVED. Trademarks are owned or controlled by the Canadian Real Estate Association (CREA) and identify real estate professionals who are members of CREA (REALTOR®, REALTORS®) and/or the quality of services they provide (MLS®, Multiple Listing Service®)

Listing information last updated on August 5th, 2025 at 1:32am MDT