

\$314,900 - 27131 Twp Road 513, Rural Parkland County

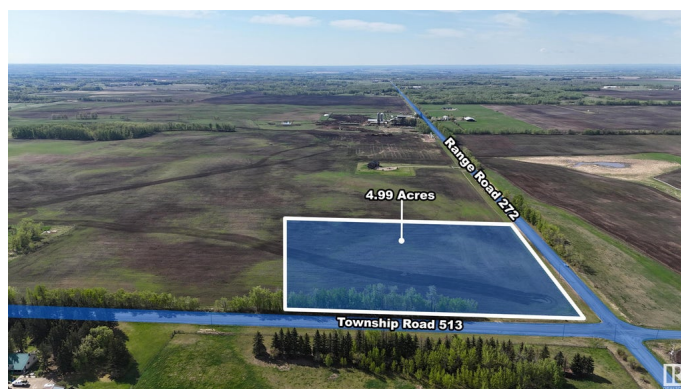
MLS® #E4436209

\$314,900

0 Bedroom, 0.00 Bathroom,
Rural on 4.99 Acres

None, Rural Parkland County, AB

Build your dream acreage on this 4.99-acre corner lot, ideally located just 25 minutes from west Edmonton. Out of subdivision and surrounded by farmland, this property offers the freedom to create your ideal rural lifestyle—whether it's a quiet retreat, a hobby farm, or a home with room for a shop, horses, or chickens. The lot features partial fencing, some mature trees, and easy access from a quiet country road. Zoned for flexibility and not subject to subdivision restrictions, you can enjoy space and privacy without added controls. Only 10 minutes to Devon, 15 minutes to Spruce Grove, and just 5 minutes to the highly rated Graminia K-9 School, this property blends peaceful country living with convenient access to town. A rare opportunity in a sought-after area. The property lines referenced on are not guaranteed to be exact.



Essential Information

MLS® #	E4436209
Price	\$314,900
Bathrooms	0.00
Acres	4.99
Type	Rural
Sub-Type	Vacant Lot/Land
Status	Active

Community Information

Address	27131 Twp Road 513
Area	Rural Parkland County
Subdivision	None
City	Rural Parkland County
County	ALBERTA
Province	AB
Postal Code	T7Y 1H1

Exterior

Exterior Features Schools, See Remarks, Partially Fenced

Additional Information

Date Listed	May 12th, 2025
Days on Market	84
Zoning	Zone 90

DATA IS DEEMED RELIABLE BUT IS NOT GUARANTEED ACCURATE BY THE REALTORS® ASSOCIATION OF EDMONTON. COPYRIGHT 2025 BY THE REALTORS® ASSOCIATION OF EDMONTON. ALL RIGHTS RESERVED. Trademarks are owned or controlled by the Canadian Real Estate Association (CREA) and identify real estate professionals who are members of CREA (REALTOR®, REALTORS®) and/or the quality of services they provide (MLS®, Multiple Listing Service®)

Listing information last updated on August 4th, 2025 at 1:17pm MDT