

\$309,900 - 3416 135 Avenue, Edmonton

MLS® #E4437950

\$309,900

4 Bedroom, 2.50 Bathroom, 1,161 sqft

Single Family on 0.00 Acres

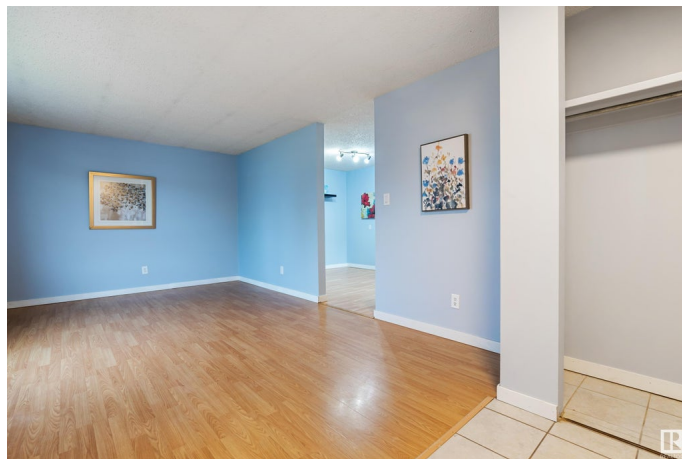
Belmont, Edmonton, AB

Are you looking for an affordable starter home with 3 bedrooms on the main floor and 1 bedroom in the fully finished basement? This newly painted half-duplex bungalow is bright and spacious with laminate flooring. Dining area is open to the kitchen with window. The primary bedroom has a two-piece bathroom. There are additional two good size bedrooms on the main level and an updated 4-piece bathroom. You will love the open family room with kitchenette in the fully finished basement. Perfect for those movie nights. The second refrigerator stays. There is a second full bathroom in the basement and a bedroom. Fenced huge backyard waiting for the gardener in you. Front parking stall for parking. Minutes to shopping, schools, banking, public transportation. Perfect for first-time homebuyers or investors.

Built in 1975

Essential Information

MLS® #	E4437950
Price	\$309,900
Bedrooms	4
Bathrooms	2.50
Full Baths	2
Half Baths	1
Square Footage	1,161



Acres	0.00
Year Built	1975
Type	Single Family
Sub-Type	Half Duplex
Style	Bungalow
Status	Active

Community Information

Address	3416 135 Avenue
Area	Edmonton
Subdivision	Belmont
City	Edmonton
County	ALBERTA
Province	AB
Postal Code	T5A 2V7

Amenities

Amenities	See Remarks
Parking Spaces	2
Parking	Front Drive Access, Stall

Interior

Interior Features	ensuite bathroom
Appliances	Dryer, Hood Fan, Oven-Microwave, Stove-Electric, Washer, Refrigerators-Two
Heating	Forced Air-1, Natural Gas
Stories	2
Has Basement	Yes
Basement	Full, Finished

Exterior

Exterior	Wood, Metal
Exterior Features	Fenced, Park/Reserve, Public Transportation, Schools, Shopping Nearby
Roof	Asphalt Shingles
Construction	Wood, Metal
Foundation	Concrete Perimeter

Additional Information

Date Listed May 22nd, 2025

Days on Market 28

Zoning Zone 35

DATA IS DEEMED RELIABLE BUT IS NOT GUARANTEED ACCURATE BY THE REALTORS® ASSOCIATION OF EDMONTON. COPYRIGHT 2025 BY THE REALTORS® ASSOCIATION OF EDMONTON. ALL RIGHTS RESERVED. Trademarks are owned or controlled by the Canadian Real Estate Association (CREA) and identify real estate professionals who are members of CREA (REALTOR®, REALTORS®) and/or the quality of services they provide (MLS®, Multiple Listing Service®)

Listing information last updated on June 19th, 2025 at 2:47am MDT