

\$271,050 - N/A, Rural Westlock County

MLS® #E4438364

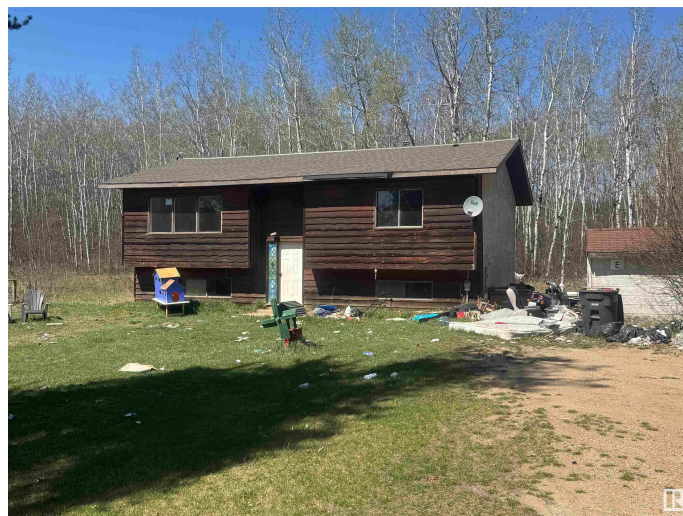
\$271,050

3 Bedroom, 1.00 Bathroom, 1,116 sqft

Rural on 2.01 Acres

Regal Park Village, Rural Westlock County,
AB

Opportunity in Regal Park Village! This 1984 bi-level sits on a beautifully treed and private 2.01-acre lot, offering peace and potential just waiting to be unlocked. With 3 bedrooms and 1 full 4-piece bath on the main floor, the home also features a partially started large bathroom in the basement—a blank canvas to design your dream layout. The spacious basement is ready for development, making this an ideal property for those looking to add value and personalize their space. Nestled in the desirable Regal Park Village, you'll love the quiet, natural setting while still being close to town. Whether you're a savvy investor, handy homeowner, or looking for an affordable acreage, this property offers excellent upside. Don't miss your chance to own a slice of country living with endless potential! Sold as-is, where-is.



Built in 1984

Essential Information

MLS® #	E4438364
Price	\$271,050
Bedrooms	3
Bathrooms	1.00
Full Baths	1
Square Footage	1,116

Acres	2.01
Year Built	1984
Type	Rural
Sub-Type	Detached Single Family
Style	Bi-Level
Status	Active

Community Information

Address	N/A
Area	Rural Westlock County
Subdivision	Regal Park Village
City	Rural Westlock County
County	ALBERTA
Province	AB
Postal Code	T0G 1L0

Amenities

Features	See Remarks
----------	-------------

Interior

Heating	Forced Air-1, Natural Gas
Stories	1
Has Basement	Yes
Basement	Full, Partially Finished

Exterior

Exterior	Wood
Exterior Features	See Remarks
Construction	Wood
Foundation	Concrete Perimeter

Additional Information

Date Listed	May 22nd, 2025
Days on Market	76
Zoning	Zone 60
RE / Bank Owned	Yes

DATA IS DEEMED RELIABLE BUT IS NOT GUARANTEED ACCURATE BY THE REALTORS® ASSOCIATION OF EDMONTON. COPYRIGHT 2025 BY THE REALTORS® ASSOCIATION OF EDMONTON. ALL RIGHTS RESERVED. Trademarks are owned or controlled by the Canadian Real Estate Association (CREA) and identify real estate professionals who are members of CREA (REALTOR®, REALTORS®) and/or the quality of services they

provide (MLS®®, Multiple Listing Service®®)
Listing information last updated on August 6th, 2025 at 9:03am MDT