

\$674,400 - 53 Rhea Crescent, St. Albert

MLS® #E4438568

\$674,400

3 Bedroom, 2.50 Bathroom, 1,236 sqft

Single Family on 0.00 Acres

Riverside (St. Albert), St. Albert, AB

ITâ€™S YOUR TIME NOW!! Introducing the
â€œMARICOPAâ€• by Master Builder, Homes
By Avi. This Half-Duplex, Bungalow-Villa
w/back 185 sqft deck, has EVERYTHING YOU
NEED TO LIVE COMFORTABLY. Includes
front & rear landscaping PLUS 1 year of yard
maintenanceâ€¢PRICELESS! Features dual
zone heating furnace for improved comfort
w/tailored temperature settings. Showcases 3
bedrooms, 2.5 bathrooms, main level flex
room & full-sized laundry room that has
walk-thru access to mudroom off dble garage.
(2 bedrooms, 4pc bath & Rec Room in FULLY
FINISHED BASEMENT w/9â€™ ceiling
height). Handsome upgrades throughout entire
home featuring quartz countertops, eat-on
centre island with undermount sink,
abundance of kitchen cabinetry with soft close
pot & pan drawers, chimney style hood fan,
pantry & generous appliance allowance.
Vaulted ceiling & electric fireplace in open
concept great room. Love where you Live in
scenic Riverside, ST. Albert. Welcome Home!

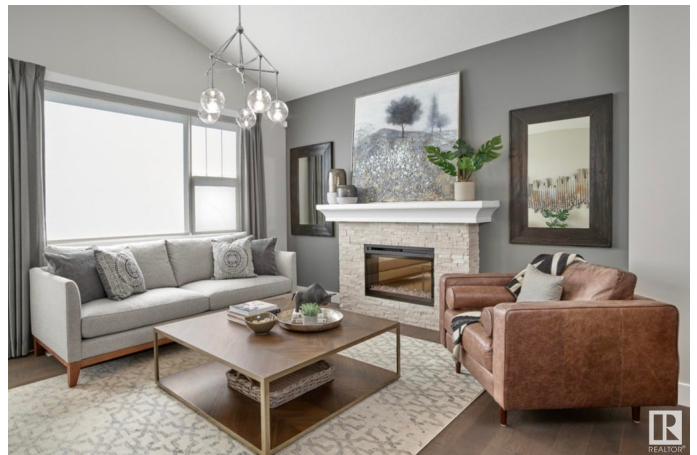
Built in 2025

Essential Information

MLS® # E4438568

Price \$674,400

Bedrooms 3



Bathrooms	2.50
Full Baths	2
Half Baths	1
Square Footage	1,236
Acres	0.00
Year Built	2025
Type	Single Family
Sub-Type	Half Duplex
Style	Bungalow
Status	Active

Community Information

Address	53 Rhea Crescent
Area	St. Albert
Subdivision	Riverside (St. Albert)
City	St. Albert
County	ALBERTA
Province	AB
Postal Code	T8N 8A4

Amenities

Amenities	Ceiling 9 ft., Deck, Television Connection, Vaulted Ceiling, Vinyl Windows, HRV System, 9 ft. Basement Ceiling
Parking Spaces	4
Parking	Double Garage Attached, Front Drive Access

Interior

Interior Features	ensuite bathroom
Appliances	Garage Control, Garage Opener, Hood Fan, Builder Appliance Credit
Heating	Forced Air-1, Natural Gas
Fireplace	Yes
Fireplaces	Insert, Mantel
Stories	2
Has Basement	Yes
Basement	Full, Finished

Exterior

Exterior	Wood, Stone, Vinyl, Hardie Board Siding
Exterior Features	Golf Nearby, Landscaped, No Back Lane, Playground Nearby, Schools,

	Shopping Nearby, See Remarks
Roof	Asphalt Shingles
Construction	Wood, Stone, Vinyl, Hardie Board Siding
Foundation	Concrete Perimeter

Additional Information

Date Listed	May 26th, 2025
Days on Market	68
Zoning	Zone 24

DATA IS DEEMED RELIABLE BUT IS NOT GUARANTEED ACCURATE BY THE REALTORS® ASSOCIATION OF EDMONTON. COPYRIGHT 2025 BY THE REALTORS® ASSOCIATION OF EDMONTON. ALL RIGHTS RESERVED. Trademarks are owned or controlled by the Canadian Real Estate Association (CREA) and identify real estate professionals who are members of CREA (REALTOR®, REALTORS®) and/or the quality of services they provide (MLS®, Multiple Listing Service®)

Listing information last updated on August 2nd, 2025 at 3:02pm MDT