

\$474,000 - 20 62320 Rge Rd 411a, Rural Bonnyville M.D.

MLS® #E4439217

\$474,000

4 Bedroom, 3.50 Bathroom, 2,283 sqft

Rural on 2.47 Acres

Cherry Ridge Estates, Rural Bonnyville M.D.,
AB

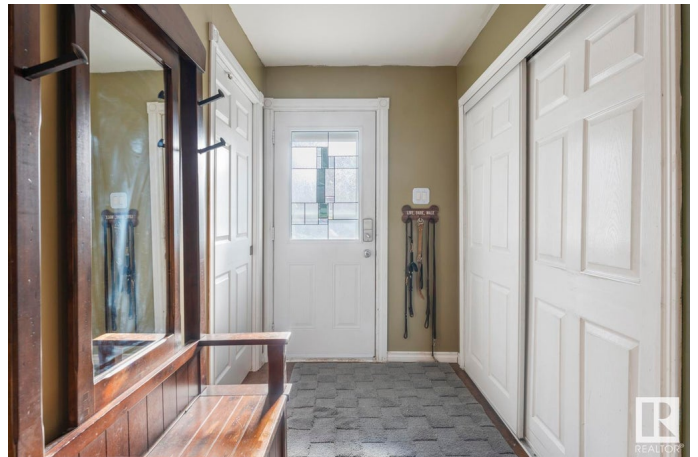
Rustic charm meets country comfort on 2.47 acres. The main floor offers an open layout with a spacious living room featuring a wood stove insert and window seat, kitchen with an island, dining area, and large primary bedroom with 3 piece ensuite and walk-in closet. A large covered deck off the living room has beautiful eastern views and a hot tub. Convenient 2 piece bathroom, and laundry off the front entry. Upstairs youâ€™ll find two bedrooms, a full bath with soaker tub, and a flex spaceâ€”perfect for a playroom or home office. The walkout basement has 10' ceilings and heated tile floors, a large entry, rec room, den/spare room, and plenty of storage. The large double heated attached garage walks into the basement. The backyard has a large securely fenced area, great for kids or pets . Bonus: a 64'x30' double-truss fabric Quonset with 20' peakâ€”ideal for storage or projects. Close to the local ski hill and French Bay beach, 10 minutes to Cold Lake North. Peaceful, practical, and ready for country living.

Built in 1974

Essential Information

MLS® # E4439217

Price \$474,000



| | |
|----------------|------------------------|
| Bedrooms | 4 |
| Bathrooms | 3.50 |
| Full Baths | 3 |
| Half Baths | 1 |
| Square Footage | 2,283 |
| Acres | 2.47 |
| Year Built | 1974 |
| Type | Rural |
| Sub-Type | Detached Single Family |
| Style | 2 Storey |
| Status | Active |

Community Information

| | |
|-------------|-----------------------|
| Address | 20 62320 Rge Rd 411a |
| Area | Rural Bonnyville M.D. |
| Subdivision | Cherry Ridge Estates |
| City | Rural Bonnyville M.D. |
| County | ALBERTA |
| Province | AB |
| Postal Code | T0A 0T0 |

Amenities

| | |
|----------|--|
| Features | Hot Tub, Patio, R.V. Storage, Walkout Basement, Natural Gas BBQ Hookup |
|----------|--|

Interior

| | |
|-------------------|---|
| Interior Features | ensuite bathroom |
| Heating | Forced Air-1, In Floor Heat System, Natural Gas |
| Fireplace | Yes |
| Stories | 3 |
| Has Basement | Yes |
| Basement | Full, Partially Finished |

Exterior

| | |
|-------------------|---|
| Exterior | Wood |
| Exterior Features | Cul-De-Sac, Fenced, Hillside, Landscaped, No Through Road, Private Setting, Ski Hill Nearby |
| Construction | Wood |
| Foundation | Concrete Perimeter |

Additional Information

Date Listed May 29th, 2025
Days on Market 67
Zoning Zone 60

DATA IS DEEMED RELIABLE BUT IS NOT GUARANTEED ACCURATE BY THE REALTORS® ASSOCIATION OF EDMONTON. COPYRIGHT 2025 BY THE REALTORS® ASSOCIATION OF EDMONTON. ALL RIGHTS RESERVED.Trademarks are owned or controlled by the Canadian Real Estate Association (CREA) and identify real estate professionals who are members of CREA (REALTOR®, REALTORS®) and/or the quality of services they provide (MLS®, Multiple Listing Service®)
Listing information last updated on August 4th, 2025 at 6:02pm MDT