

\$419,900 - 9304 128a Avenue, Edmonton

MLS® #E4439423

\$419,900

3 Bedroom, 2.00 Bathroom, 1,086 sqft

Single Family on 0.00 Acres

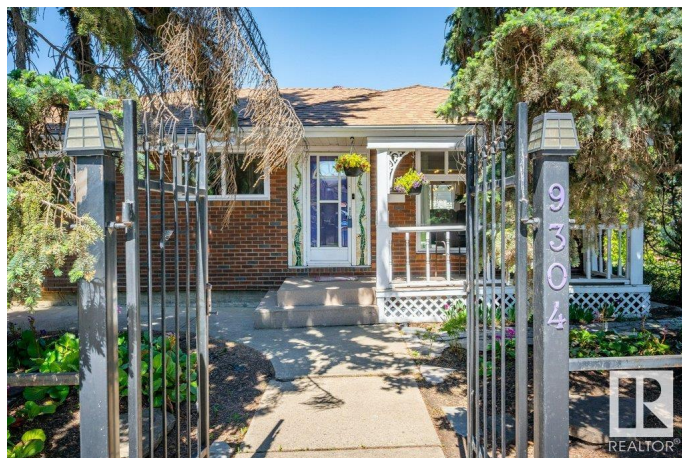
Killarney, Edmonton, AB

Incredible opportunity! This charming home sits on a massive 617 m² corner lot beside an alley, offering privacy, space, and loads of potential. Real hardwood floors flow through the main level, with a bright white kitchen featuring granite counters, stainless appliances, pantry, and stylish lighting. Two updated 4-piece baths—one on each level. The fully finished basement offers a third bedroom, a cozy bar area, cold room, and laundry. Major upgrades: GreenFox windows and patio door (2022) with transferable warranty, newer fridge/microwave, high-efficiency furnace, and central AC. The backyard is a private retreat with a pond, pump, in-ground sprinklers, patio stones, perennials, grapes, and 2 sheds. The oversized double garage is heated, insulated, wired with 220V, and connected by a covered, secured breezeway—plus a newer Thermal Tech door. Brick veneer exterior, right next to a school, mature trees, and great neighbours!

Built in 1959

Essential Information

MLS® #	E4439423
Price	\$419,900
Bedrooms	3
Bathrooms	2.00



Full Baths	2
Square Footage	1,086
Acres	0.00
Year Built	1959
Type	Single Family
Sub-Type	Detached Single Family
Style	Bungalow
Status	Active

Community Information

Address	9304 128a Avenue
Area	Edmonton
Subdivision	Killarney
City	Edmonton
County	ALBERTA
Province	AB
Postal Code	T5E 0J9

Amenities

Amenities	Air Conditioner, Vinyl Windows, See Remarks
Parking Spaces	4
Parking	220 Volt Wiring, Double Garage Detached, Heated, Insulated, Over Sized

Interior

Appliances	Air Conditioning-Central, Dishwasher-Built-In, Dryer, Garage Control, Garage Opener, Hood Fan, Refrigerator, Storage Shed, Stove-Electric, Washer, Window Coverings
Heating	Forced Air-1, Natural Gas
Fireplace	Yes
Fireplaces	Woodstove
Stories	2
Has Basement	Yes
Basement	Full, Finished

Exterior

Exterior	Wood, Brick, Metal
Exterior Features	Back Lane, Corner Lot, Fruit Trees/Shrubs, Playground Nearby, Public Transportation, Schools, See Remarks

Roof	Asphalt Shingles
Construction	Wood, Brick, Metal
Foundation	Concrete Perimeter

School Information

Elementary	Mee-Yah-Noh School
Middle	Killarney School
High	Queen Elizabeth School

Additional Information

Date Listed	May 29th, 2025
Days on Market	21
Zoning	Zone 02

DATA IS DEEMED RELIABLE BUT IS NOT GUARANTEED ACCURATE BY THE REALTORS® ASSOCIATION OF EDMONTON. COPYRIGHT 2025 BY THE REALTORS® ASSOCIATION OF EDMONTON. ALL RIGHTS RESERVED. Trademarks are owned or controlled by the Canadian Real Estate Association (CREA) and identify real estate professionals who are members of CREA (REALTOR®, REALTORS®) and/or the quality of services they provide (MLS®, Multiple Listing Service®)

Listing information last updated on June 19th, 2025 at 6:32pm MDT