

\$629,900 - 7326 166a Avenue, Edmonton

MLS® #E4439682

\$629,900

4 Bedroom, 2.50 Bathroom, 2,454 sqft

Single Family on 0.00 Acres

Mayliewan, Edmonton, AB

Immaculate 4-bedroom + Den, 3 Bath home on a Pie-Shaped Lot in the desirable community of Mayliewan! This beautifully maintained 2-storey home offers a bright, welcoming layout perfect for family living. The main floor offers open-to-below ceilings in the living room, a cozy family room with a fireplace, a den that is ideal for a home office, bedroom, or playroom, and a formal dining room. Upstairs, you'll find four generously sized bedrooms, a spacious bonus area, and two full bathrooms. Recent upgrades include central air conditioning (2024), new carpet (2024), new shingles (2023), and updated window coverings. The basement is framed with electrical completed, ready for your personal touch. Enjoy the outdoors in a beautifully landscaped backyard with a large deck, perfect for entertaining. The double-attached garage is finished with sleek epoxy flooring. Located close to schools, parks, and everyday amenities, this move-in-ready home is a must-see!

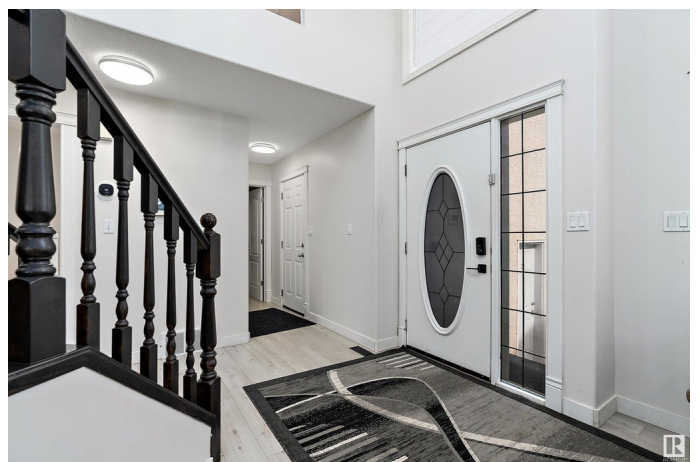
Built in 2004

Essential Information

MLS® # E4439682

Price \$629,900

Bedrooms 4



Bathrooms	2.50
Full Baths	2
Half Baths	1
Square Footage	2,454
Acres	0.00
Year Built	2004
Type	Single Family
Sub-Type	Detached Single Family
Style	2 Storey
Status	Active

Community Information

Address	7326 166a Avenue
Area	Edmonton
Subdivision	Mayliewan
City	Edmonton
County	ALBERTA
Province	AB
Postal Code	T5Z 3Y1

Amenities

Amenities	Air Conditioner, Deck, Gazebo, No Animal Home, See Remarks
Parking	Double Garage Attached

Interior

Interior Features	ensuite bathroom
Appliances	Air Conditioning-Central, Dishwasher-Built-In, Dryer, Microwave Hood Fan, Refrigerator, Stove-Gas, Washer, Window Coverings
Heating	Forced Air-1, Natural Gas
Stories	2
Has Basement	Yes
Basement	Full, See Remarks

Exterior

Exterior	Wood, Stucco
Exterior Features	Fenced, Landscaped, Playground Nearby, Public Transportation, Schools, Shopping Nearby, See Remarks
Roof	Asphalt Shingles
Construction	Wood, Stucco

Foundation Concrete Perimeter

Additional Information

Date Listed May 31st, 2025

Days on Market 19

Zoning Zone 28

DATA IS DEEMED RELIABLE BUT IS NOT GUARANTEED ACCURATE BY THE REALTORS® ASSOCIATION OF EDMONTON. COPYRIGHT 2025 BY THE REALTORS® ASSOCIATION OF EDMONTON. ALL RIGHTS RESERVED.Trademarks are owned or controlled by the Canadian Real Estate Association (CREA) and identify real estate professionals who are members of CREA (REALTOR®, REALTORS®) and/or the quality of services they provide (MLS®, Multiple Listing Service®)

Listing information last updated on June 18th, 2025 at 9:47pm MDT