

\$1,080,888 - 671 180 Street, Edmonton

MLS® #E4439776

\$1,080,888

4 Bedroom, 4.00 Bathroom, 3,076 sqft

Single Family on 0.00 Acres

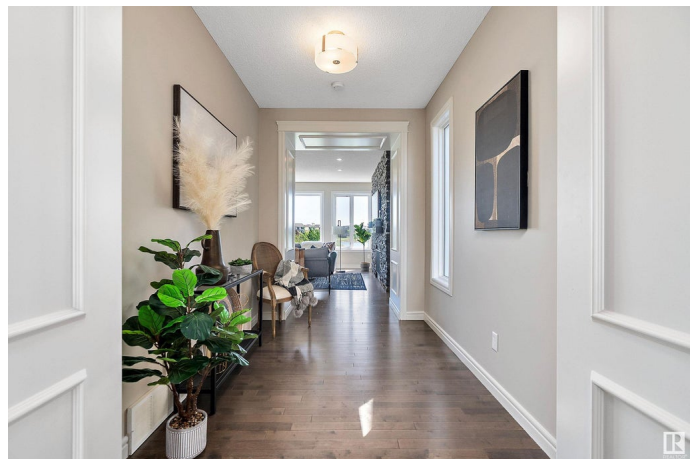
Windermere, Edmonton, AB

This is lakeside luxury in the heart of Windermere. Backing directly onto the water, this walk-out home offers 3,000+ sq ft above grade, a rare 30â€™™ triple garage & upscale designer finishes throughout. The chefâ€™™s kitchen features granite counters, gas range & a massive island. Open main floor living spaces frame breathtaking lake views, while a main floor bedroom with full bath adds flexibility. Upstairs, unwind in a stunning primary retreat with freestanding tub, oversized shower & dual vanities. A bonus room, family lounge, second ensuite & full laundry complete the upper level. Walk to trails, minutes from the river valley, Windermere Golf Course, restaurants, amenities & groceries. The open-concept main floor flows effortlesslyâ€™™ framing the lake like a living masterpiece. Every window is a view, every room a retreat. A large deck completes the experience, perfect for morning coffee or evening wine by the water. Rare, refined & perfectly located. An amazing opportunity not to be missed! Hurry!

Built in 2015

Essential Information

MLS® #	E4439776
Price	\$1,080,888



Bedrooms	4
Bathrooms	4.00
Full Baths	4
Square Footage	3,076
Acres	0.00
Year Built	2015
Type	Single Family
Sub-Type	Detached Single Family
Style	2 Storey
Status	Active

Community Information

Address	671 180 Street
Area	Edmonton
Subdivision	Windermere
City	Edmonton
County	ALBERTA
Province	AB
Postal Code	T6W 2S8

Amenities

Amenities	Air Conditioner, Ceiling 9 ft., No Smoking Home, Patio, Walkout Basement, See Remarks
Parking Spaces	6
Parking	Triple Garage Attached
Is Waterfront	Yes

Interior

Interior Features	ensuite bathroom
Appliances	Air Conditioning-Central, Dishwasher-Built-In, Dryer, Hood Fan, Oven-Microwave, Refrigerator, Stove-Gas, Washer
Heating	Forced Air-1, Natural Gas
Fireplace	Yes
Fireplaces	Mantel, Stone Facing, See Remarks
Stories	2
Has Basement	Yes
Basement	Full, Unfinished

Exterior

Exterior	Wood, Vinyl
Exterior Features	Backs Onto Lake, Fenced, Landscaped, Low Maintenance Landscape, Playground Nearby, Public Transportation, Schools, Shopping Nearby, View Lake, See Remarks
Roof	Asphalt Shingles
Construction	Wood, Vinyl
Foundation	Concrete Perimeter

School Information

Elementary	Constable Daniel Woodall S
Middle	Riverbend School
High	Lillian Osborne School

Additional Information

Date Listed	May 31st, 2025
Days on Market	17
Zoning	Zone 56

DATA IS DEEMED RELIABLE BUT IS NOT GUARANTEED ACCURATE BY THE REALTORS® ASSOCIATION OF EDMONTON. COPYRIGHT 2025 BY THE REALTORS® ASSOCIATION OF EDMONTON. ALL RIGHTS RESERVED.Trademarks are owned or controlled by the Canadian Real Estate Association (CREA) and identify real estate professionals who are members of CREA (REALTOR®, REALTORS®) and/or the quality of services they provide (MLS®, Multiple Listing Service®)

Listing information last updated on June 17th, 2025 at 5:02am MDT