

## \$679,900 - 66 Edgefield Way, St. Albert

MLS® #E4441365

**\$679,900**

4 Bedroom, 2.50 Bathroom, 2,273 sqft

Single Family on 0.00 Acres

Erin Ridge North, St. Albert, AB

Move-in ready and complete with appliances, this brand-new 2,272 sq ft single-family home is located in the desirable community of Erin Ridge North, St. Albert. Features 4 spacious bedrooms, 2.5 bathrooms, and a bright open-concept layout with soaring open-to-below ceilings and large windows that fill the home with natural light. The modern kitchen offers a stylish backsplash, large island, and walk-through pantry connected to the mudroom. Cozy fireplace in the main living area and another in the upstairs bonus room. The primary suite includes a walk-in closet and spa-like ensuite with double sinks, a soaker tub, and tiled shower. Separate entrance to the unfinished basement offers excellent potential for a future legal suite. Completed rear deck, upgraded light fixtures, vinyl plank flooring, and double attached garage. Located near top-rated schools, scenic trails, parks, shopping, and restaurants—this home truly has it all, inside and out. Immediate possession available!

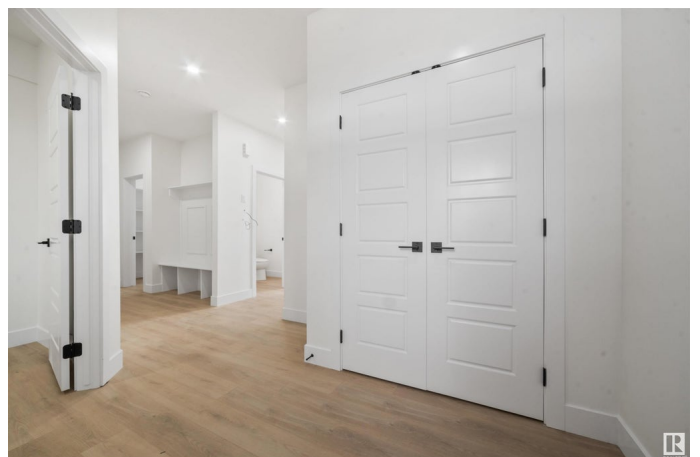
Built in 2025

### Essential Information

MLS® # E4441365

Price \$679,900

Bedrooms 4



Bathrooms	2.50
Full Baths	2
Half Baths	1
Square Footage	2,273
Acres	0.00
Year Built	2025
Type	Single Family
Sub-Type	Detached Single Family
Style	2 Storey
Status	Active

### Community Information

Address	66 Edgefield Way
Area	St. Albert
Subdivision	Erin Ridge North
City	St. Albert
County	ALBERTA
Province	AB
Postal Code	T8N 7Z9

### Amenities

Amenities	On Street Parking, Hot Water Natural Gas, No Animal Home, No Smoking Home
Parking	Double Garage Attached

### Interior

Interior Features	ensuite bathroom
Appliances	Garage Control, See Remarks
Heating	Forced Air-1, Natural Gas
Fireplace	Yes
Fireplaces	Wall Mount
Stories	2
Has Basement	Yes
Basement	Full, Unfinished

### Exterior

Exterior	Wood, Vinyl
Exterior Features	Back Lane, Golf Nearby, Playground Nearby, Schools, Shopping Nearby
Roof	Asphalt Shingles

Construction	Wood, Vinyl
Foundation	Concrete Perimeter

**Additional Information**

Date Listed	June 9th, 2025
Days on Market	54
Zoning	Zone 24

DATA IS DEEMED RELIABLE BUT IS NOT GUARANTEED ACCURATE BY THE REALTORS® ASSOCIATION OF EDMONTON. COPYRIGHT 2025 BY THE REALTORS® ASSOCIATION OF EDMONTON. ALL RIGHTS RESERVED.Trademarks are owned or controlled by the Canadian Real Estate Association (CREA) and identify real estate professionals who are members of CREA (REALTOR®, REALTORS®) and/or the quality of services they provide (MLS®, Multiple Listing Service®)

Listing information last updated on August 2nd, 2025 at 7:32pm MDT