

\$439,999 - 15912 10 Avenue, Edmonton

MLS® #E4441660

\$439,999

3 Bedroom, 2.50 Bathroom, 1,527 sqft

Single Family on 0.00 Acres

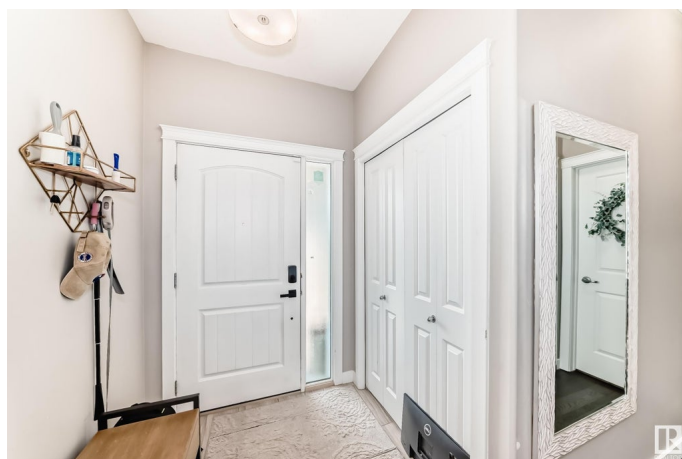
Glenridding Heights, Edmonton, AB

Welcome to this fully upgraded half duplex in the desirable neighbourhood of Glenridding Heights! Main floor features open concept with wall to wall engineered hardwood flooring, stunning kitchen with granite countertops, large walk-through pantry, stainless steel appliances, raised eating bar, bright dining area, spacious living room with coffered ceilings and natural gas fireplace + 2 pce bath. Upper level features 3 perfect sized bedrooms all with black-out blinds, master with 4 pce en-suite, walk in closet & convenience of upstairs laundry! This home also includes Air Conditioning! Relax & entertain on back deck with privacy wall in a fully fenced & professionally landscaped yard! Close to Anthony Henday, Windermere Shopping, Schools, Parks, Trails and Public Transportation.

Built in 2014

Essential Information

| | |
|----------------|-----------|
| MLS® # | E4441660 |
| Price | \$439,999 |
| Bedrooms | 3 |
| Bathrooms | 2.50 |
| Full Baths | 2 |
| Half Baths | 1 |
| Square Footage | 1,527 |



| | |
|------------|---------------|
| Acres | 0.00 |
| Year Built | 2014 |
| Type | Single Family |
| Sub-Type | Half Duplex |
| Style | 2 Storey |
| Status | Active |

Community Information

| | |
|-------------|---------------------|
| Address | 15912 10 Avenue |
| Area | Edmonton |
| Subdivision | Glenridding Heights |
| City | Edmonton |
| County | ALBERTA |
| Province | AB |
| Postal Code | T6W 2H2 |

Amenities

| | |
|-----------|---|
| Amenities | Air Conditioner, Ceiling 9 ft., See Remarks |
| Parking | Single Garage Attached |

Interior

| | |
|-------------------|---|
| Interior Features | ensuite bathroom |
| Appliances | Air Conditioning-Central, Dishwasher-Built-In, Dryer, Garage Opener, Hood Fan, Oven-Microwave, Refrigerator, Stove-Electric, Washer, Window Coverings |
| Heating | Forced Air-2, Natural Gas |
| Fireplace | Yes |
| Fireplaces | Tile Surround |
| Stories | 2 |
| Has Basement | Yes |
| Basement | Full, Unfinished |

Exterior

| | |
|-------------------|--|
| Exterior | Wood, Stone, Vinyl |
| Exterior Features | Fenced, Golf Nearby, Landscaped, Playground Nearby, Public Transportation, Schools, Shopping Nearby, See Remarks |
| Roof | Asphalt Shingles |
| Construction | Wood, Stone, Vinyl |
| Foundation | Concrete Perimeter |

Additional Information

Date Listed June 11th, 2025
Days on Market 6
Zoning Zone 56

DATA IS DEEMED RELIABLE BUT IS NOT GUARANTEED ACCURATE BY THE REALTORS® ASSOCIATION OF EDMONTON. COPYRIGHT 2025 BY THE REALTORS® ASSOCIATION OF EDMONTON. ALL RIGHTS RESERVED.Trademarks are owned or controlled by the Canadian Real Estate Association (CREA) and identify real estate professionals who are members of CREA (REALTOR®, REALTORS®) and/or the quality of services they provide (MLS®, Multiple Listing Service®)
Listing information last updated on June 17th, 2025 at 7:02pm MDT