

# \$524,900 - 54310 Rge Road 24, Rural Lac Ste. Anne County

MLS® #E4441730

**\$524,900**

5 Bedroom, 2.50 Bathroom, 1,232 sqft

Rural on 4.99 Acres

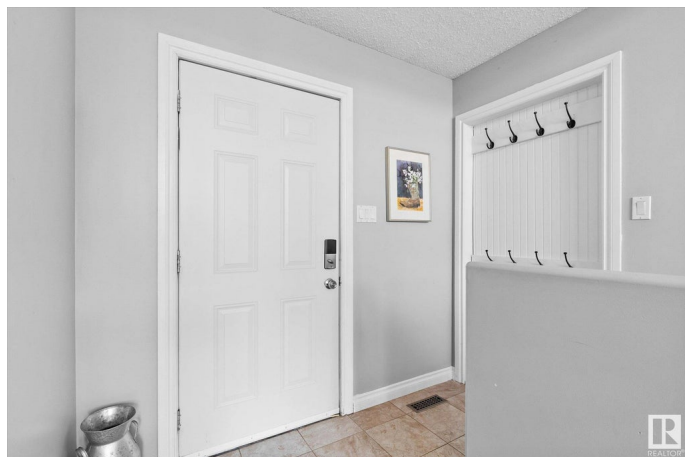
None, Rural Lac Ste. Anne County, AB

Welcome to this beautifully maintained 5-bedroom bungalow nestled on 4.99 acres of serene countryside. Designed for comfort and functionality, this home features a stunning main living area with soaring ceilings that create a bright and open atmosphere. The spacious kitchen and dining areas are perfect for entertaining, while the recently updated ensuite adds a touch of luxury to the primary bedroom. Downstairs, youâ€™ll find the added comfort of in-floor heating throughout the fully developed basementâ€”so ideal for cozy winters.

Built in 2007

## Essential Information

MLS® #	E4441730
Price	\$524,900
Bedrooms	5
Bathrooms	2.50
Full Baths	2
Half Baths	1
Square Footage	1,232
Acres	4.99
Year Built	2007
Type	Rural



Sub-Type	Detached Single Family
Style	Bungalow
Status	Active

### Community Information

Address	54310 Rge Road 24
Area	Rural Lac Ste. Anne County
Subdivision	None
City	Rural Lac Ste. Anne County
County	ALBERTA
Province	AB
Postal Code	T0E 1V0

### Amenities

Features	See Remarks
----------	-------------

### Interior

Interior Features	ensuite bathroom
Heating	Forced Air-1, In Floor Heat System, Natural Gas, Water
Stories	2
Has Basement	Yes
Basement	Full, Finished

### Exterior

Exterior	Wood
Exterior Features	See Remarks
Construction	Wood
Foundation	Concrete Perimeter

### Additional Information

Date Listed	June 11th, 2025
Days on Market	6
Zoning	Zone 70

DATA IS DEEMED RELIABLE BUT IS NOT GUARANTEED ACCURATE BY THE REALTORS® ASSOCIATION OF EDMONTON. COPYRIGHT 2025 BY THE REALTORS® ASSOCIATION OF EDMONTON. ALL RIGHTS RESERVED. Trademarks are owned or controlled by the Canadian Real Estate Association (CREA) and identify real estate professionals who are members of CREA (REALTOR®, REALTORS®) and/or the quality of services they provide (MLS®, Multiple Listing Service®)

Listing information last updated on June 16th, 2025 at 8:02pm MDT