

\$10,000 - Rge Rd 90, Rural Saddle Hills County

MLS® #E4441833

\$10,000

0 Bedroom, 0.00 Bathroom,
Rural on 155.32 Acres

None, Rural Saddle Hills County, AB

Farm Grazing License for sale by Auction -
Bidding starts June 20 at 9:00am. Lots begin
closing at 2pm June 26, 2025. Listed price is
starting bid/reserve for auction and has no
bearing on final sale price or actual value.
LAND SIZE: 62.9 hectares / 155.32 Acres.
Carrying capacity is estimated as 30 AUMs
(Animal Unit Months) of use annually. Appears
to be perimeter fenced in fair condition, lease
fenced, gate access in southeast corner.
LEGAL: SE-24-82-9-W6

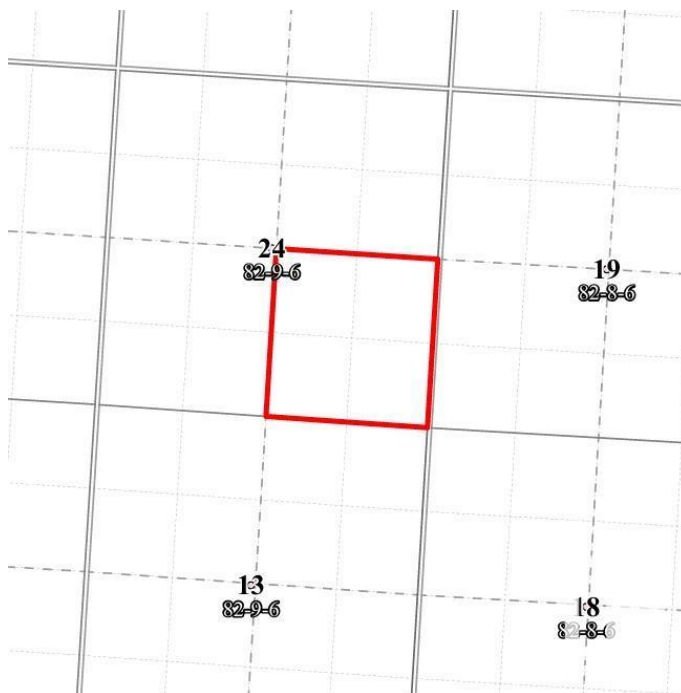


Essential Information

MLS® #	E4441833
Price	\$10,000
Bathrooms	0.00
Acres	155.32
Type	Rural
Sub-Type	Vacant Lot/Land
Status	Active

Community Information

Address	Rge Rd 90
Area	Rural Saddle Hills County
Subdivision	None
City	Rural Saddle Hills County
County	ALBERTA
Province	AB



Postal Code T0H 2A0

Exterior

Exterior Features See Remarks

Additional Information

Date Listed June 11th, 2025

Days on Market 56

Zoning Zone 60

DATA IS DEEMED RELIABLE BUT IS NOT GUARANTEED ACCURATE BY THE REALTORS® ASSOCIATION OF EDMONTON. COPYRIGHT 2025 BY THE REALTORS® ASSOCIATION OF EDMONTON. ALL RIGHTS RESERVED.Trademarks are owned or controlled by the Canadian Real Estate Association (CREA) and identify real estate professionals who are members of CREA (REALTOR®, REALTORS®) and/or the quality of services they provide (MLS®, Multiple Listing Service®)

Listing information last updated on August 5th, 2025 at 10:17pm MDT