

Courtesy Of Monica G Halvorson Of Century 21 Leading

# \$825,000 - 21 2319 Twp Road 524, Rural Parkland County

MLS® #E4442195

**\$825,000**

4 Bedroom, 2.50 Bathroom, 3,078 sqft

Rural on 3.48 Acres

Lakecrest, Rural Parkland County, AB

Country living at its finest! This sprawling 3000+ sq ft ranch-style bungalow is nestled on 3.48 private acres with stunning views of rolling meadows and Little Jackfish Lake—just west of Stony Plain. Enjoy the comfort of in-floor heat throughout, including the oversized quad garage, and everything you need on one level. This home features 4 spacious bedrooms (each with walk-in closets), a den, large living room, and a massive country kitchen with gas stove and ample counter space. The dining area offers a built-in mini fridge and access to your partially covered deck and peaceful backyard. The primary suite includes a soaker tub, multi-head shower, and huge walk-in closet. Additional highlights: a large mudroom with benches, hooks, and a private dog wash station, plus a laundry room off the kitchen. Circular driveway, fenced area for kids and pets, concrete pad for RVs, and garage space for all your toys—this property truly has it all!

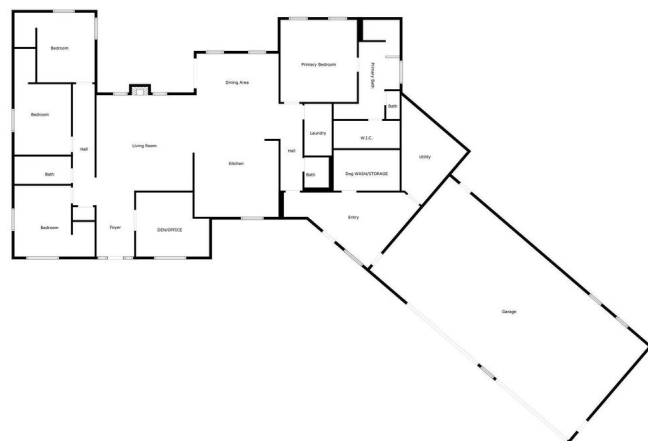
Built in 2016

## Essential Information

MLS® # E4442195

Price \$825,000

Bedrooms 4



Sizes And Dimensions Are Approximate, Actual May Vary.

Bathrooms	2.50
Full Baths	2
Half Baths	1
Square Footage	3,078
Acres	3.48
Year Built	2016
Type	Rural
Sub-Type	Detached Single Family
Style	Bungalow
Status	Active

### Community Information

Address	21 2319 Twp Road 524
Area	Rural Parkland County
Subdivision	Lakecrest
City	Rural Parkland County
County	ALBERTA
Province	AB
Postal Code	T7Y 3M5

### Amenities

Features	Closet Organizers, Deck, Detectors Smoke, Fire Pit, Front Porch, Hot Water Natural Gas, No Smoking Home, Vinyl Windows, Natural Gas BBQ Hookup
----------	--

### Interior

Interior Features	ensuite bathroom
Heating	Forced Air-1, In Floor Heat System, Natural Gas
Stories	1
Has Basement	Yes
Basement	None, No Basement

### Exterior

Exterior	Wood
Exterior Features	Fenced, Hillside, Rolling Land
Construction	Wood
Foundation	Concrete Perimeter

### Additional Information

Date Listed June 12th, 2025

Days on Market 5

Zoning Zone 90

DATA IS DEEMED RELIABLE BUT IS NOT GUARANTEED ACCURATE BY THE REALTORS® ASSOCIATION OF EDMONTON. COPYRIGHT 2025 BY THE REALTORS® ASSOCIATION OF EDMONTON. ALL RIGHTS RESERVED. Trademarks are owned or controlled by the Canadian Real Estate Association (CREA) and identify real estate professionals who are members of CREA (REALTOR®, REALTORS®) and/or the quality of services they provide (MLS®, Multiple Listing Service®)

Listing information last updated on June 17th, 2025 at 1:32am MDT