

\$424,900 - 1306 53102 Rge Road 40, Rural Parkland County

MLS® #E4442557

\$424,900

2 Bedroom, 1.00 Bathroom, 629 sqft

Rural on 0.54 Acres

Moonlight Bay (Parkland), Rural Parkland County, AB

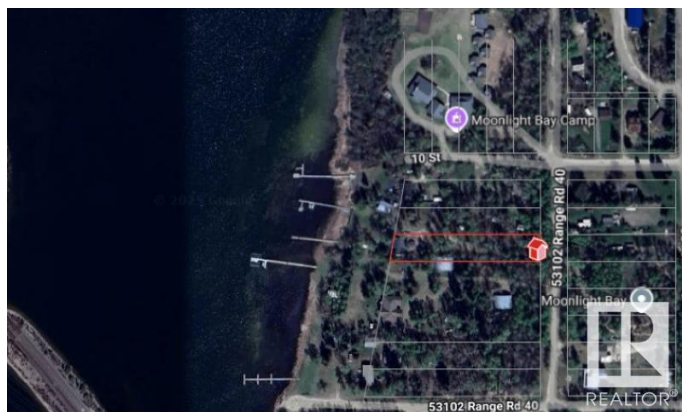
Lakefront Dream! Excellent opportunity to own a great property in Moonlight Bay. This prime 1/2 acre treed lot with lake access transports you away from the city into a tranquil setting with a quick commute from Edmonton for those weekend getaways. This property includes a 3-season cottage, drilled well, and dock. Keep it rustic or design your forever dream home - the potential is endless.

Built in 1963

Essential Information

| | |
|----------------|-----------|
| MLS® # | E4442557 |
| Price | \$424,900 |
| Bedrooms | 2 |
| Bathrooms | 1.00 |
| Full Baths | 1 |
| Square Footage | 629 |
| Acres | 0.54 |
| Year Built | 1963 |
| Type | Rural |
| Sub-Type | Cottage |
| Style | Bungalow |
| Status | Active |

Community Information



| | |
|-------------|--------------------------|
| Address | 1306 53102 Rge Road 40 |
| Area | Rural Parkland County |
| Subdivision | Moonlight Bay (Parkland) |
| City | Rural Parkland County |
| County | ALBERTA |
| Province | AB |
| Postal Code | T0E 2Y0 |

Amenities

| | |
|----------|----------|
| Features | Fire Pit |
|----------|----------|

Interior

| | |
|--------------|-------------------|
| Heating | Wood Stove, Wood |
| Stories | 1 |
| Has Basement | Yes |
| Basement | None, No Basement |

Exterior

| | |
|-------------------|--|
| Exterior | Wood |
| Exterior Features | Backs Onto Lake, Lake Access Property, Lake View |
| Construction | Wood |
| Foundation | See Remarks |

Additional Information

| | |
|----------------|-----------------|
| Date Listed | June 15th, 2025 |
| Days on Market | 1 |
| Zoning | Zone 93 |

DATA IS DEEMED RELIABLE BUT IS NOT GUARANTEED ACCURATE BY THE REALTORS® ASSOCIATION OF EDMONTON. COPYRIGHT 2025 BY THE REALTORS® ASSOCIATION OF EDMONTON. ALL RIGHTS RESERVED. Trademarks are owned or controlled by the Canadian Real Estate Association (CREA) and identify real estate professionals who are members of CREA (REALTOR®, REALTORS®) and/or the quality of services they provide (MLS®, Multiple Listing Service®)

Listing information last updated on June 16th, 2025 at 1:32pm MDT