

# **\$1,000,000 - 129 53226 Rge Road 261, Rural Parkland County**

MLS® #E4442600

**\$1,000,000**

5 Bedroom, 3.50 Bathroom, 2,091 sqft

Rural on 0.75 Acres

Helenslea Heath, Rural Parkland County, AB

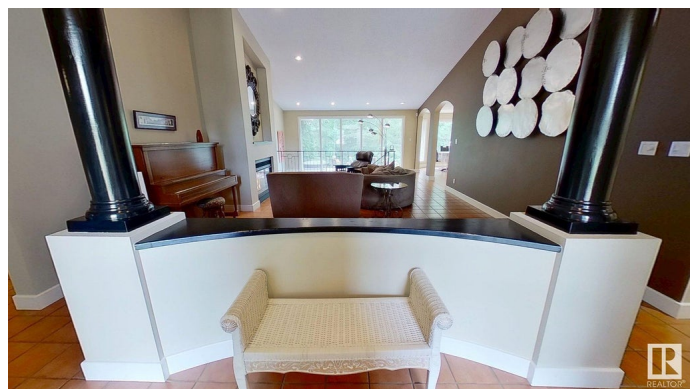
Private, peaceful country residential acreage minutes from Edmonton in prestigious Helenslea Heath. Minutes from Glendale golf course and Acheson Business Park. Custom-built executive bungalow with attached, heated, triple garage on .75-acre, fenced, pie shape lot. East facing front, low maintenance landscaping, mature trees and 85-foot driveway. Three sheds, tiered deck and 2-person hot tub. West facing back looks out onto county reserve. This stunning home has five bedrooms and four bathrooms. Open floor plan, exotic granite counters, solid hardwood floors, stainless steel appliances and large walk in pantry. Walk in closets in main level bedrooms with solid wood shelves and organizers. Large mudroom with two closets and bench seat storage. Vaulted ceiling, floor to ceiling windows and gas fireplace bring natural light and warmth into this home. Huge laundry room, wet bar, valor fireplace, steam shower and luxury vinyl plank flooring on fully finished lower level. Major Upgrades by owner 2011-2025.

Built in 1994

## **Essential Information**

MLS® #

E4442600



|                |                        |
|----------------|------------------------|
| Price          | \$1,000,000            |
| Bedrooms       | 5                      |
| Bathrooms      | 3.50                   |
| Full Baths     | 3                      |
| Half Baths     | 1                      |
| Square Footage | 2,091                  |
| Acres          | 0.75                   |
| Year Built     | 1994                   |
| Type           | Rural                  |
| Sub-Type       | Detached Single Family |
| Style          | Bungalow               |
| Status         | Active                 |

### Community Information

|             |                        |
|-------------|------------------------|
| Address     | 129 53226 Rge Road 261 |
| Area        | Rural Parkland County  |
| Subdivision | Helenslea Heath        |
| City        | Rural Parkland County  |
| County      | ALBERTA                |
| Province    | AB                     |
| Postal Code | T7Y 1A3                |

### Amenities

|          |  |
|----------|--|
| Features | Air Conditioner, Carbon Monoxide Detectors, Ceiling 9 ft., Closet Organizers, Deck, Detectors Smoke, Hot Tub, Hot Water Natural Gas, No Smoking Home, Smart/Program. Thermostat, Television Connection, Vaulted Ceiling, Wet Bar, Wood Windows |
|----------|--|

### Interior

|                   |   |
|-------------------|---|
| Interior Features | ensuite bathroom                        |
| Heating           | Forced Air-1, Forced Air-2, Natural Gas |
| Fireplace         | Yes                                     |
| Stories           | 2                                       |
| Has Basement      | Yes                                     |
| Basement          | Full, Finished                          |

### Exterior

|                   |   |
|-------------------|---|
| Exterior          | Wood  |
| Exterior Features | Backs Onto Park/Trees, Cul-De-Sac, Environmental Reserve, Fenced, |

Golf Nearby, Landscaped, Low Maintenance Landscape, Park/Reserve,  
Playground Nearby, Private Setting, Shopping Nearby

Construction      Wood  
Foundation        Concrete Perimeter

### **Additional Information**

Date Listed        June 16th, 2025  
Days on Market    93  
Zoning              Zone 70

DATA IS DEEMED RELIABLE BUT IS NOT GUARANTEED ACCURATE BY THE REALTORS® ASSOCIATION OF EDMONTON. COPYRIGHT 2025 BY THE REALTORS® ASSOCIATION OF EDMONTON. ALL RIGHTS RESERVED. Trademarks are owned or controlled by the Canadian Real Estate Association (CREA) and identify real estate professionals who are members of CREA (REALTOR®, REALTORS®) and/or the quality of services they provide (MLS®, Multiple Listing Service®)

Listing information last updated on September 17th, 2025 at 8:02pm MDT