

## \$559,999 - 171 Caledon Crescent, Spruce Grove

MLS® #E4442793

**\$559,999**

3 Bedroom, 2.50 Bathroom, 1,862 sqft

Single Family on 0.00 Acres

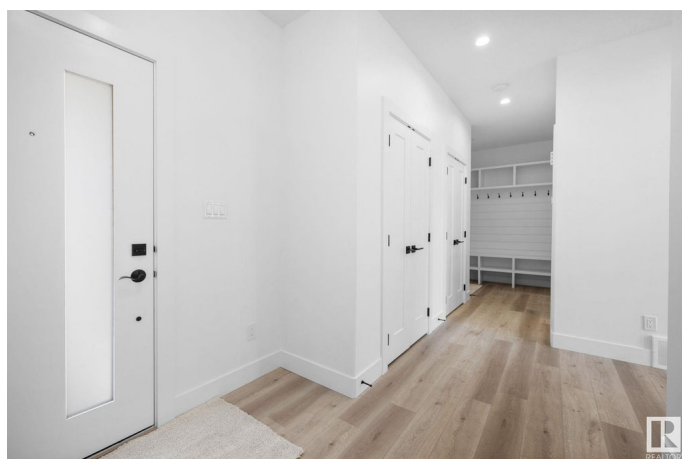
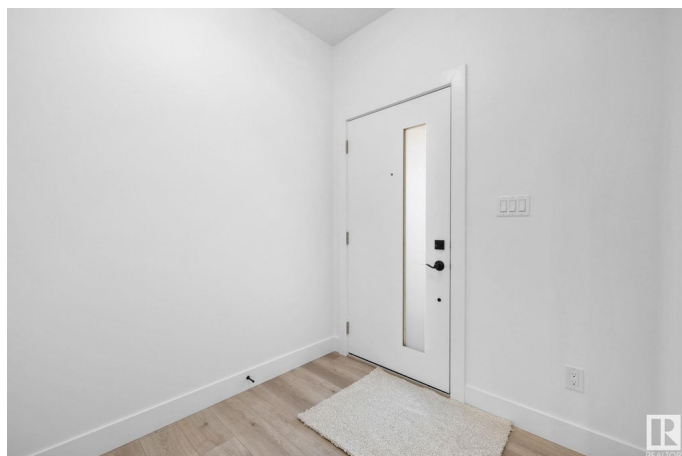
Copperhaven, Spruce Grove, AB

Step into this stunning Copperhaven home offering nearly 1,900 sq. ft. of thoughtfully designed living space. A functional mudroom connects to a walk-through pantry, leading into a chef-inspired kitchen complete with ceiling-height cabinets and sleek quartz countertops. The open-to-above great room is a true showpiece, highlighted by an elegant fireplace feature wall—perfect for relaxing or entertaining. Upstairs, you’ll find three spacious bedrooms and a versatile bonus room ideal for family movie nights. The master suite is a luxurious retreat with a tray ceiling, a spa-like 5-piece ensuite and direct access to the laundry room through the walk-in closet! Additional highlights include a separate side entrance and an unfinished basement ready for your personal touch. Located within walking distance to schools, this is the perfect home for growing families. Photos are from a similar home—actual finishes may vary. July possession available!

Built in 2025

### Essential Information

MLS® #	E4442793
Price	\$559,999
Bedrooms	3
Bathrooms	2.50



Full Baths	2
Half Baths	1
Square Footage	1,862
Acres	0.00
Year Built	2025
Type	Single Family
Sub-Type	Detached Single Family
Style	2 Storey
Status	Active

### Community Information

Address	171 Caledon Crescent
Area	Spruce Grove
Subdivision	Copperhaven
City	Spruce Grove
County	ALBERTA
Province	AB
Postal Code	T7X 4E3

### Amenities

Amenities	Ceiling 9 ft., See Remarks, HRV System, Natural Gas BBQ Hookup, 9 ft. Basement Ceiling
Parking	Double Garage Attached

### Interior

Interior Features	ensuite bathroom
Appliances	Garage Opener, Hood Fan, Builder Appliance Credit
Heating	Forced Air-1, Natural Gas
Fireplace	Yes
Fireplaces	Freestanding
Stories	2
Has Basement	Yes
Basement	Full, Unfinished

### Exterior

Exterior	Wood, Stone, Vinyl
Exterior Features	Schools, Partially Fenced
Roof	Asphalt Shingles
Construction	Wood, Stone, Vinyl

Foundation                      Concrete Perimeter

**Additional Information**

Date Listed                      June 17th, 2025  
Days on Market                33  
Zoning                              Zone 91

DATA IS DEEMED RELIABLE BUT IS NOT GUARANTEED ACCURATE BY THE REALTORS® ASSOCIATION OF EDMONTON. COPYRIGHT 2025 BY THE REALTORS® ASSOCIATION OF EDMONTON. ALL RIGHTS RESERVED.Trademarks are owned or controlled by the Canadian Real Estate Association (CREA) and identify real estate professionals who are members of CREA (REALTOR®, REALTORS®) and/or the quality of services they provide (MLS®, Multiple Listing Service®)  
Listing information last updated on July 20th, 2025 at 4:47pm MDT