

\$572,200 - 86 Penn Place, Spruce Grove

MLS® #E4448164

\$572,200

4 Bedroom, 3.00 Bathroom, 1,741 sqft

Single Family on 0.00 Acres

Prescott, Spruce Grove, AB

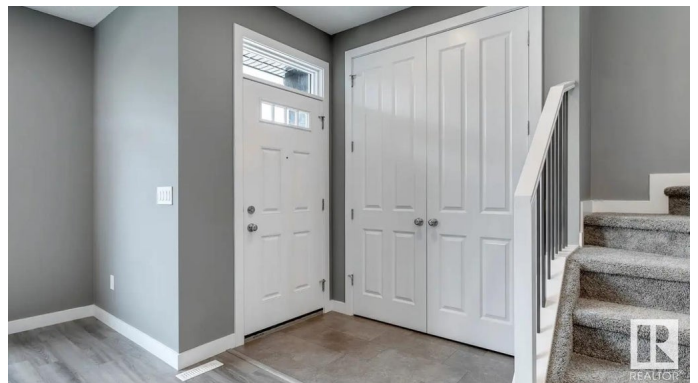
FULL BED & BATH ON MAIN! Award-winning Crystal Creek Homes presents this stunning two-storey 4 bed, 3 bath detached home in the highly desirable community of Prescott in Spruce Grove. This home offers a perfect blend of modern style and comfort. Enjoy the charming large front porch before stepping inside to an open-concept main floor, featuring a spacious living room with fireplace, modern kitchen, pantry, and dining area. The main floor also includes a bedroom and a full bathroom, perfect for guests or additional living space. Upstairs, you'll find a versatile bonus room, convenient walk-in laundry, a 4-piece bathroom, and 3 generously sized bedrooms. The primary suite boasts a walk-in closet and a private ensuite with shower. This home also comes with a \$5,000 appliance credit, a separate side entrance to the basement, and a TRIPLE detached garage! Don't miss your opportunity to make it yours. UNDER CONSTRUCTION! First 13 photos are of the same model (interior colors differ) rest are of the home.

Built in 2025

Essential Information

MLS® # E4448164

Price \$572,200



Bedrooms	4
Bathrooms	3.00
Full Baths	3
Square Footage	1,741
Acres	0.00
Year Built	2025
Type	Single Family
Sub-Type	Detached Single Family
Style	2 Storey
Status	Active

Community Information

Address	86 Penn Place
Area	Spruce Grove
Subdivision	Prescott
City	Spruce Grove
County	ALBERTA
Province	AB
Postal Code	T7X 2W7

Amenities

Amenities	Carbon Monoxide Detectors, Ceiling 9 ft., Detectors Smoke, Vinyl Windows, See Remarks, 9 ft. Basement Ceiling
Parking	Triple Garage Detached
Is Waterfront	Yes

Interior

Interior Features	ensuite bathroom
Appliances	Garage Control, Garage Opener, See Remarks
Heating	Forced Air-1, Natural Gas
Fireplace	Yes
Fireplaces	Mantel
Stories	2
Has Basement	Yes
Basement	Full, Unfinished

Exterior

Exterior	Wood, Metal, Vinyl
Exterior Features	Park/Reserve, Playground Nearby, Schools, Shopping Nearby,

	Stream/Pond, See Remarks
Roof	Asphalt Shingles
Construction	Wood, Metal, Vinyl
Foundation	Concrete Perimeter

School Information

Elementary	Prescott Learning Centre
Middle	Prescott Learning Centre

Additional Information

Date Listed	July 14th, 2025
Days on Market	56
Zoning	Zone 91

DATA IS DEEMED RELIABLE BUT IS NOT GUARANTEED ACCURATE BY THE REALTORS® ASSOCIATION OF EDMONTON. COPYRIGHT 2025 BY THE REALTORS® ASSOCIATION OF EDMONTON. ALL RIGHTS RESERVED. Trademarks are owned or controlled by the Canadian Real Estate Association (CREA) and identify real estate professionals who are members of CREA (REALTOR®, REALTORS®) and/or the quality of services they provide (MLS®, Multiple Listing Service®)

Listing information last updated on September 8th, 2025 at 4:02am MDT