

## \$440,000 - 6 Greenbury Crescent, Spruce Grove

MLS® #E4448681

**\$440,000**

3 Bedroom, 3.00 Bathroom, 1,408 sqft

Single Family on 0.00 Acres

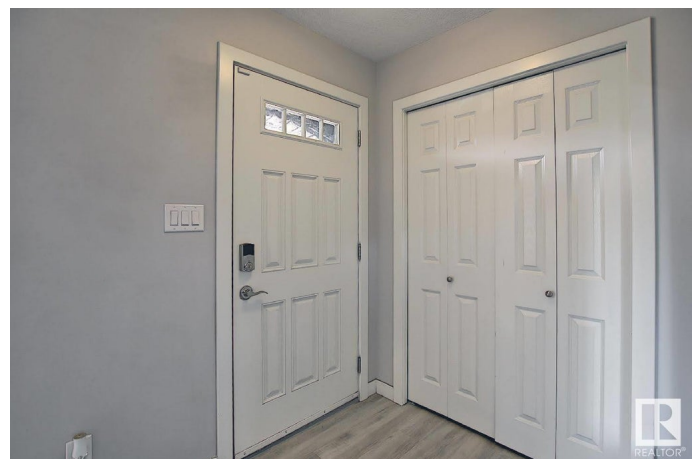
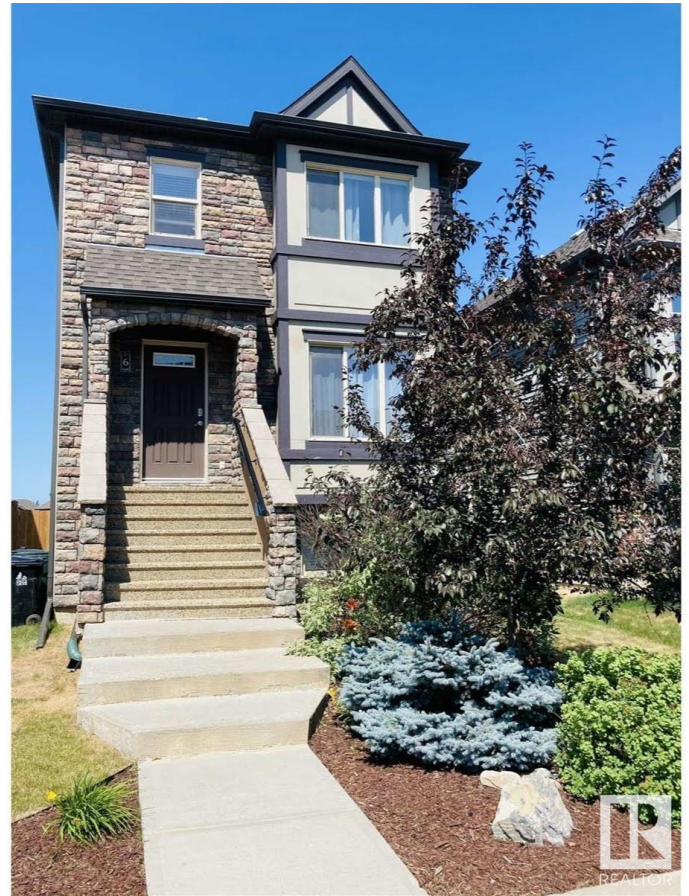
Greenbury, Spruce Grove, AB

Great location in Greenbury where you can enjoy walking trails & nature in Jubilee park. Upon entering there is a good size front entry that opens up to the main living room. The living room could be divided up into a living room/dinning room space if one chooses to. From the living room enter into the eat in kitchen with black stainless steel appliances, brown shaker style cabinets with ample cupboard space and good size island. This area is great for entertaining with family and friends. The upstairs has 3 good size bedrooms with the master bedroom having a ensuite. The basement has large windows for that added light with a family room, walk in storage closet, flex space, 2 piece bath and laundry/utility room. The property has a good size yard, deck and double garage. Close to shopping, and quick access to either highway.

Built in 2012

### Essential Information

MLS® #	E4448681
Price	\$440,000
Bedrooms	3
Bathrooms	3.00
Full Baths	2
Half Baths	2
Square Footage	1,408



Acres	0.00
Year Built	2012
Type	Single Family
Sub-Type	Detached Single Family
Style	2 Storey
Status	Active

### Community Information

Address	6 Greenbury Crescent
Area	Spruce Grove
Subdivision	Greenbury
City	Spruce Grove
County	ALBERTA
Province	AB
Postal Code	T7X 0L9

### Amenities

Amenities	On Street Parking, Deck, No Smoking Home
Parking	Double Garage Detached

### Interior

Interior Features	ensuite bathroom
Appliances	Dishwasher-Built-In, Dryer, Garage Control, Garage Opener, Microwave Hood Fan, Refrigerator, Stove-Electric, Vacuum System Attachments, Vacuum Systems, Washer, Window Coverings
Heating	Forced Air-1, Natural Gas
Stories	3
Has Basement	Yes
Basement	Full, Finished

### Exterior

Exterior	Wood, Stone, Stucco, Vinyl
Exterior Features	Back Lane, Fenced, Golf Nearby, Landscaped, Playground Nearby, Schools, Shopping Nearby
Roof	Asphalt Shingles
Construction	Wood, Stone, Stucco, Vinyl
Foundation	Concrete Perimeter

### Additional Information

Date Listed	July 18th, 2025
-------------	-----------------

Days on Market 2  
Zoning Zone 91



DATA IS DEEMED RELIABLE BUT IS NOT GUARANTEED ACCURATE BY THE REALTORS® ASSOCIATION OF EDMONTON. COPYRIGHT 2025 BY THE REALTORS® ASSOCIATION OF EDMONTON. ALL RIGHTS RESERVED. Trademarks are owned or controlled by the Canadian Real Estate Association (CREA) and identify real estate professionals who are members of CREA (REALTOR®, REALTORS®) and/or the quality of services they provide (MLS®, Multiple Listing Service®)

Listing information last updated on July 20th, 2025 at 1:47pm MDT