

Courtesy Of Fadi Georgi Of MaxWell Polaris

\$489,888 - 8234 Kiriak Loop, Edmonton

MLS® #E4456684

\$489,888

3 Bedroom, 2.50 Bathroom, 1,581 sqft
Single Family on 0.00 Acres

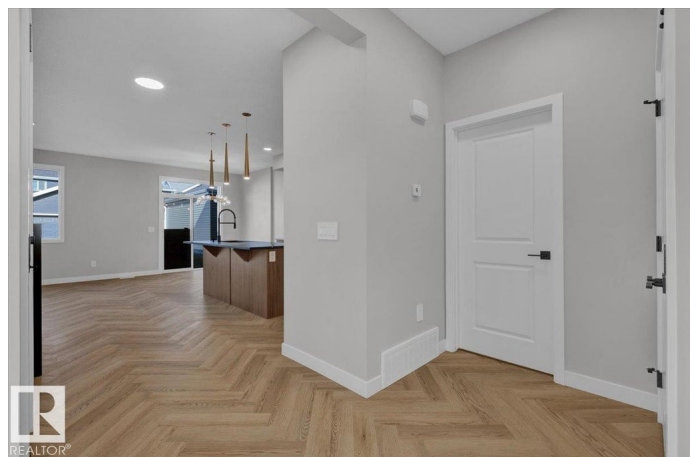
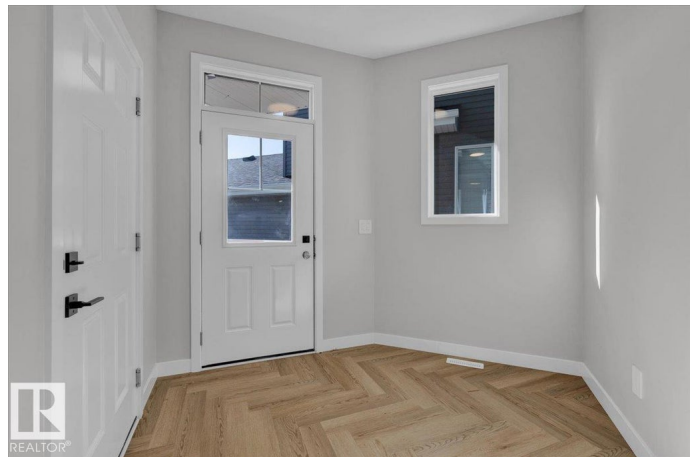
Keswick, Edmonton, AB

Stunning QUICK POSSESSION half duplex in the desirable Keswick community. Features a double attached garage, separate side door entrance and legal suite rough-ins for future development. Enter the home to a spacious foyer and open concept main floor. Kitchen features 3cm quartz light countertops, chic 39" cabinets and water line to fridge. Upstairs find laundry, main bath, flex space and three bedrooms. Primary suite has a walk-in closet and 5pc en-suite with double sinks. \$3K appliance allowance and front+back landscaping included. Photos from a previous build & may differ; interior colors are NOT represented, upgrades may vary, appliances not included. HOA TBD

Built in 2025

Essential Information

MLS® #	E4456684
Price	\$489,888
Bedrooms	3
Bathrooms	2.50
Full Baths	2
Half Baths	1
Square Footage	1,581
Acres	0.00
Year Built	2025



Type	Single Family
Sub-Type	Half Duplex
Style	2 Storey
Status	Active

Community Information

Address	8234 Kiriak Loop
Area	Edmonton
Subdivision	Keswick
City	Edmonton
County	ALBERTA
Province	AB
Postal Code	T6W 5S2

Amenities

Amenities	Ceiling 9 ft., See Remarks
Parking	Double Garage Attached

Interior

Interior Features	ensuite bathroom
Appliances	Garage Control, Garage Opener, See Remarks
Heating	Forced Air-1, Natural Gas
Stories	2
Has Basement	Yes
Basement	Full, Unfinished

Exterior

Exterior	Wood, Vinyl
Exterior Features	Airport Nearby, Playground Nearby, Public Transportation, Schools, Shopping Nearby, See Remarks
Roof	Asphalt Shingles
Construction	Wood, Vinyl
Foundation	Concrete Perimeter

Additional Information

Date Listed	September 8th, 2025
Days on Market	70
Zoning	Zone 56
HOA Fees	1

HOA Fees Freq. Annually

DATA IS DEEMED RELIABLE BUT IS NOT GUARANTEED ACCURATE BY THE REALTORS® ASSOCIATION OF EDMONTON. COPYRIGHT 2025 BY THE REALTORS® ASSOCIATION OF EDMONTON. ALL RIGHTS RESERVED. Trademarks are owned or controlled by the Canadian Real Estate Association (CREA) and identify real estate professionals who are members of CREA (REALTOR®, REALTORS®) and/or the quality of services they provide (MLS®, Multiple Listing Service®)

Listing information last updated on November 17th, 2025 at 9:17am MST