

Courtesy Of David C St. Jean Of Exp Realty

# \$5,000,000 - 8915 Strathearn Drive, Edmonton

MLS® #E4457194

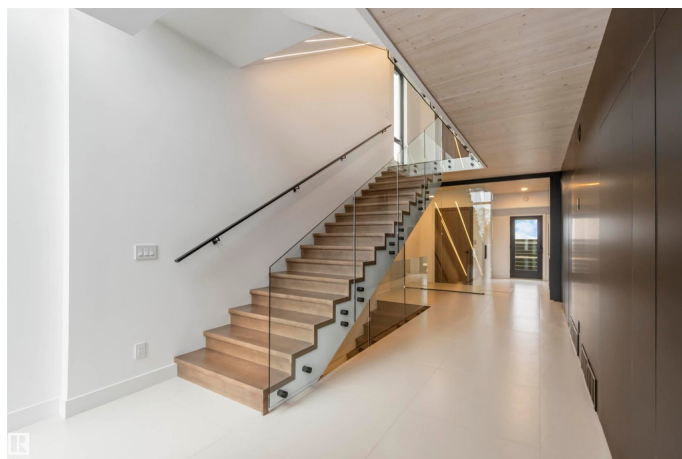
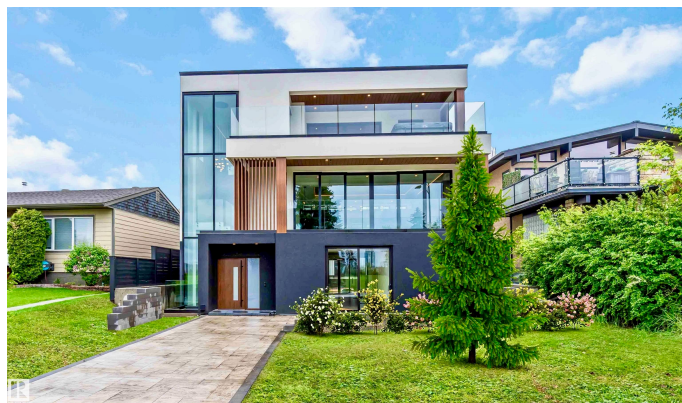
**\$5,000,000**

3 Bedroom, 4.00 Bathroom, 4,532 sqft

Single Family on 0.00 Acres

Strathearn, Edmonton, AB

Discover unmatched luxury in this award-winning Mass Timber home-the 1st of its kind in Alberta-offering over 6300sqft of living space across 4 levels. Designed by POSTMARK w/custom millwork by Scott Arthur, this architectural showpiece is perfectly positioned to capture stunning valley views & exemplifies modern sophistication. The top floor is a serene retreat, featuring a spacious primary suite with a walk-through closet, spa-inspired bathroom & a private hot tub with panoramic views. Thoughtful details include in-floor heating, 2 elegant F/P & timeless finishes. On the main floor, a refined library with a built-in humidor leads through a hidden entrance to a private poker room/ventilated cigar lounge—an exceptional space for entertaining. The media room delivers the ultimate cinematic experience, while the 1 bedroom, 1 bath garage suite offers versatile guest or rental potential. A double detached garage completes this remarkable property. This home is more than a residence—it's a bold statement!



Built in 2025

## Essential Information

MLS® # E4457194

Price \$5,000,000

Bedrooms	3
Bathrooms	4.00
Full Baths	3
Half Baths	2
Square Footage	4,532
Acres	0.00
Year Built	2025
Type	Single Family
Sub-Type	Detached Single Family
Style	3 Storey
Status	Active

### Community Information

Address	8915 Strathearn Drive
Area	Edmonton
Subdivision	Strathearn
City	Edmonton
County	ALBERTA
Province	AB
Postal Code	T6C 4C8

### Amenities

Amenities	On Street Parking, Air Conditioner, Bar, Ceiling 9 ft., Closet Organizers, Deck, Detectors Smoke, Exercise Room, Hot Tub, Hot Water Tankless, No Animal Home, No Smoking Home, Parking-Extra, Smart/Program. Thermostat, Sauna; Swirlpool; Steam, Television Connection, Wet Bar, Natural Gas BBQ Hookup, 9 ft. Basement Ceiling
Parking	Double Garage Detached

### Interior

Interior Features	ensuite bathroom
Appliances	Air Conditioning-Central, Dryer, Freezer, Garage Control, Garage Opener, Oven-Built-In, Refrigerator, Washer, Wine/Beverage Cooler, Dishwasher-Two, Stove-Countertop Inductn, Hot Tub
Heating	Forced Air-2, Natural Gas
Fireplace	Yes
Fireplaces	Tile Surround
Stories	4
Has Basement	Yes

Basement Full, Finished

## Exterior

Exterior Wood, Hardie Board Siding

Exterior Features Back Lane, Fenced, Flat Site, Golf Nearby, No Through Road, Playground Nearby, Public Transportation, Ravine View, River Valley View, Schools, Shopping Nearby, Ski Hill Nearby, View Downtown

Roof Asphalt Shingles

Construction Wood, Hardie Board Siding

Foundation Concrete Perimeter

## School Information

Elementary Rutherford School

Middle Kenilworth School

High McNally School

## Additional Information

Date Listed September 10th, 2025

Days on Market 8

Zoning Zone 18

DATA IS DEEMED RELIABLE BUT IS NOT GUARANTEED ACCURATE BY THE REALTORS® ASSOCIATION OF EDMONTON. COPYRIGHT 2025 BY THE REALTORS® ASSOCIATION OF EDMONTON. ALL RIGHTS RESERVED. Trademarks are owned or controlled by the Canadian Real Estate Association (CREA) and identify real estate professionals who are members of CREA (REALTOR®, REALTORS®) and/or the quality of services they provide (MLS®, Multiple Listing Service®)

Listing information last updated on September 18th, 2025 at 2:02am MDT